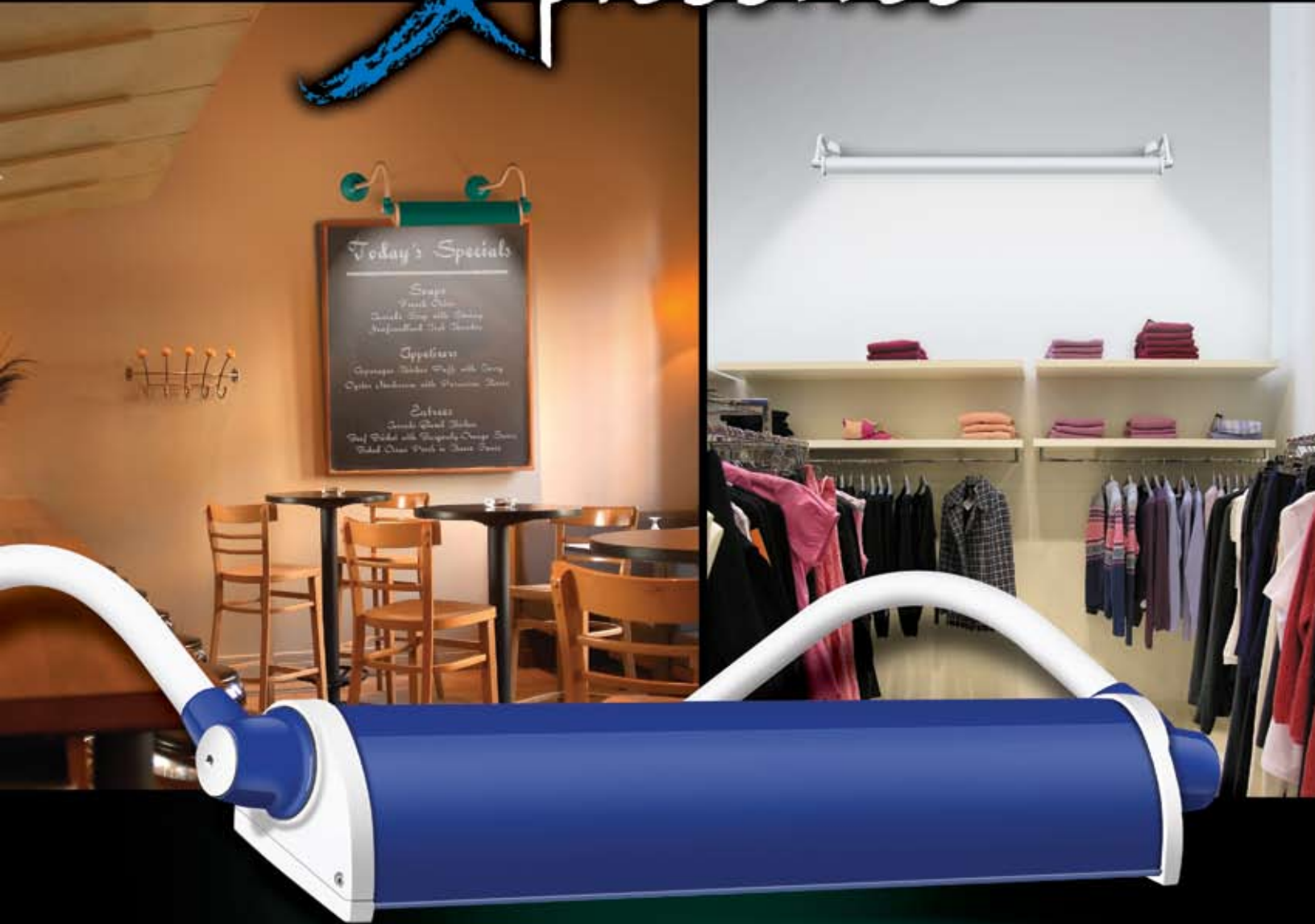


# Xpressives



PREMIUM LINEAR FLUORESCENT LIGHTING



CONTRACTOR-FRIENDLY LIGHTING SOLUTIONS

# Form and Function

## Expanding the Effectiveness of the RLM

Stonco's Xpressives series is a unique partnering of traditional round shade RLM luminaire with high performance linear fluorescent fixtures. The linear fixture incorporates stylistic features of the round luminaire and utilizes both colors and mounting arrangements for a similar appearance. In that way lighting designers have a choice of fixture types for the best lighting solution while maintaining site continuity.



## Rainbow of Color Choices

- Seven standard colors in three textures
- Four metal finishes
- Six separately finished components
- Choice of eight color combinations
- Custom colors available

## High Performance Sources and Optics

- Greater uniformity than point-source fixtures
- Uninterrupted illumination in single lengths of up to 8'
- High efficiency, better quality lighting and higher lumen maintenance
- T5HO, T8 and T12HO light sources
- Highly specular, medium hammer-tone reflector

## Flexible Mounting and Aiming

- Wall or ground mounting
- Continuous row mounting for longer runs
- Luminaire body can be rotated a full 360°
- Gooseneck and straight mounting hardware

## Superior Construction

- Engineered for performance and longevity
- Sturdy extruded and cast aluminum components
- Gasketed frame/lens ensures wet location protection
- Powder coating designed for interior or exterior installation.

# Outstanding Features, High Performance

## Contractor-Friendly Features

- Wire Wizard easy wire feed system
- Convenient wiring access
- Fast assembly and mounting

## Multiple Lengths

- 2'
- 4'
- 8'

## Color Choices

- Seven colors
- Three textures
- Four metallic finishes
- DuraPlex polyester powder coating

## Choice of Four Arm Styles

- Four arm styles
- 3/4" pipe stem
- Choice of finishes
- No exposed threads

## Fully Adjustable Aiming

- 360° rotatable mounting hub for precision light placement
- Available in contrasting colors

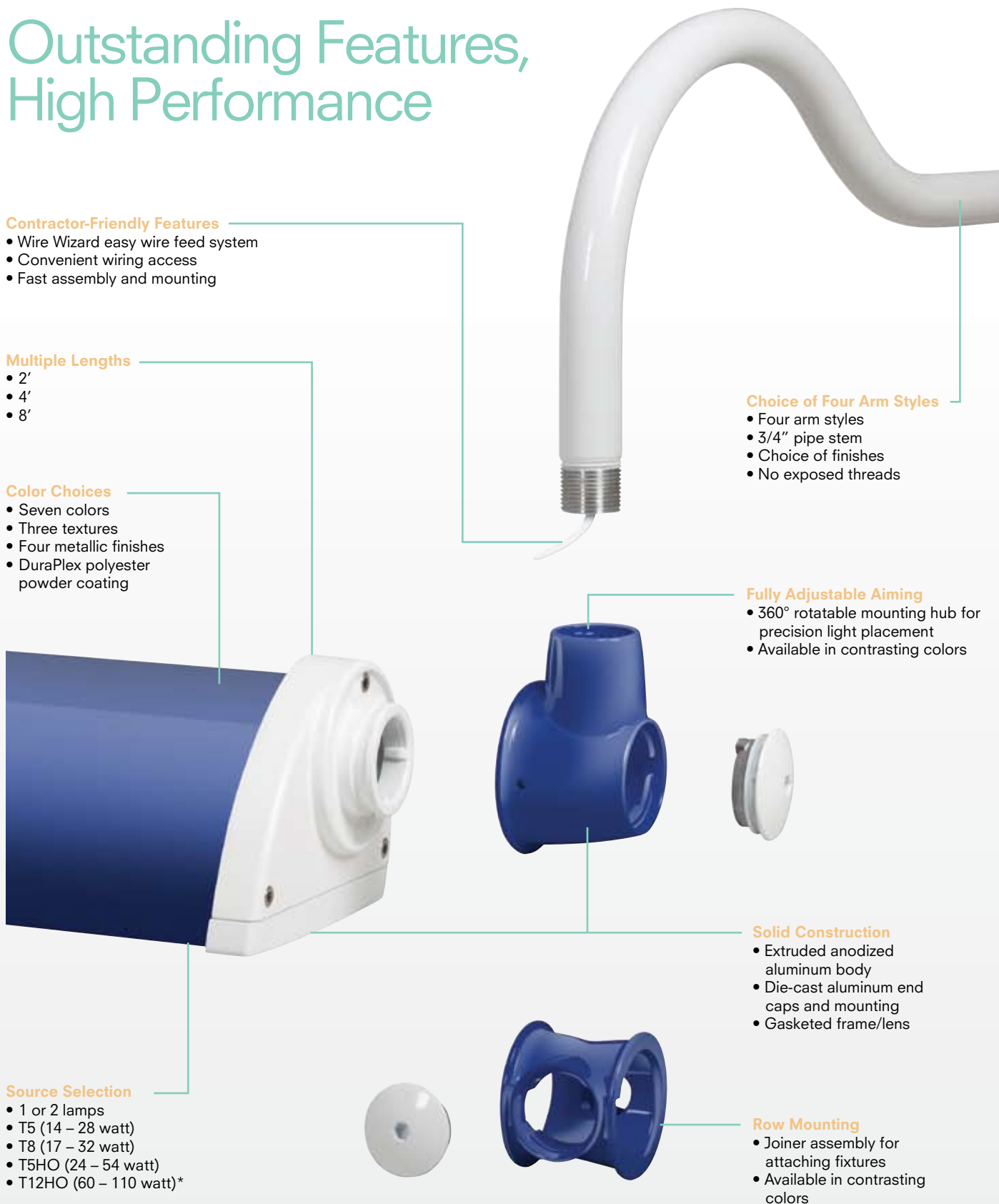
## Solid Construction

- Extruded anodized aluminum body
- Die-cast aluminum end caps and mounting
- Gasketed frame/lens

## Source Selection

- 1 or 2 lamps
- T5 (14 – 28 watt)
- T8 (17 – 32 watt)
- T5HO (24 – 54 watt)
- T12HO (60 – 110 watt)\*

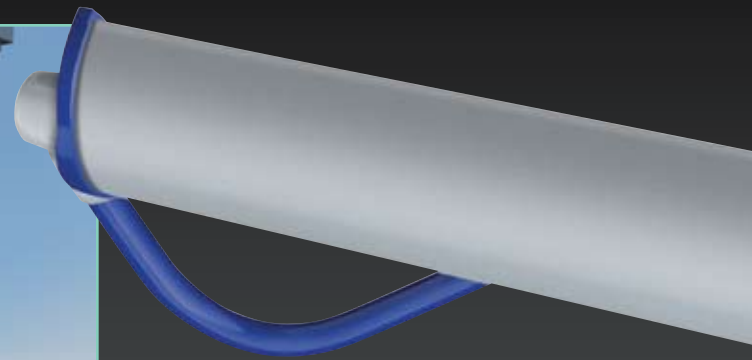
\* T12HO available as one lamp only



# Exterior Lighting

## Wall Lighting

Xpressives linear fluorescent luminaires can be easily incorporated into any building exterior to highlight architecture, provide depth to shapeless walls or to add general ambient illumination. The linear luminaire was developed to harmonize with the Xpressives round RLM series, providing fluorescent lighting where it proves most advantageous and in the same color finish.



## Sign Lighting

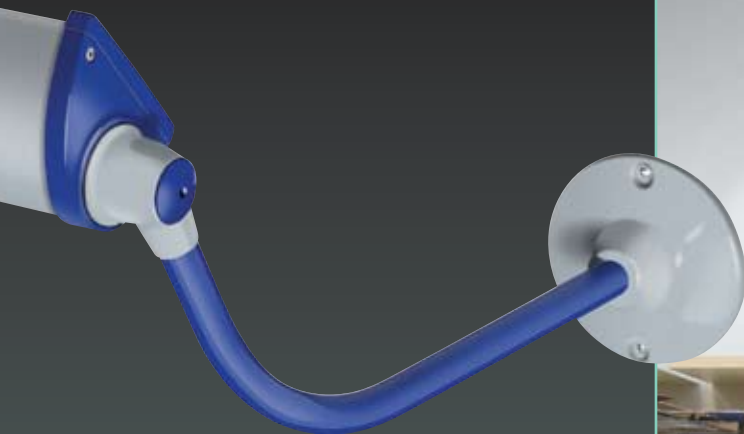
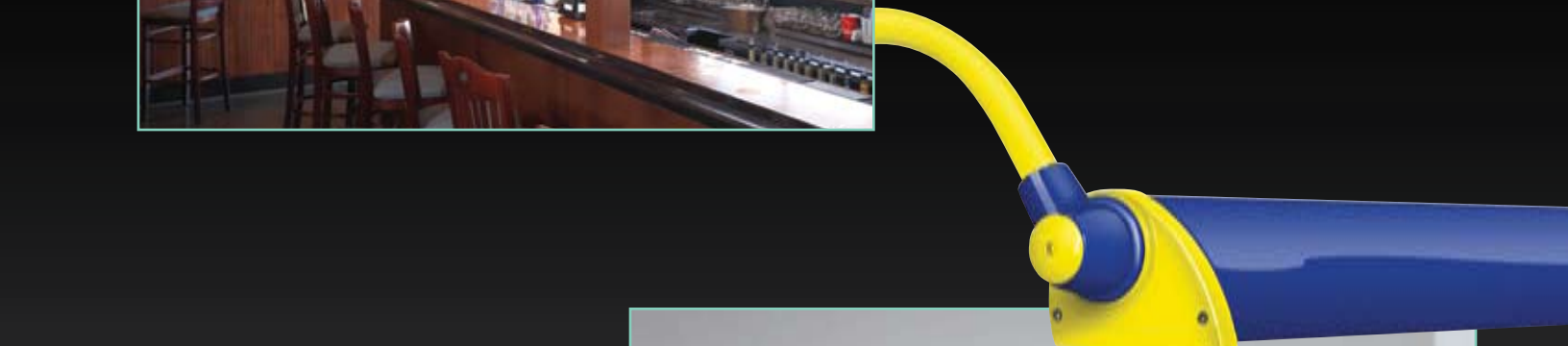
Signs are most effective when illuminated evenly and without hot spots, and the Xpressives linear series floods signs with soft, even fluorescent lighting. The linear fixture can be mounted individually in lengths up to 8' or joined for a continuous, unbroken pattern. Fixtures can be mounted in a variety of locations to accommodate the sign's location, and aiming is simplified because of the 360° luminaire rotation.

# Interior Lighting



## Restaurant

For interior accent lighting applications, shorter length Xpressives fixtures can be used in different mounting positions for dramatic lighting effects. Fixture angles can be precisely aimed to direct light as needed, and the large array of colors creates an atmosphere that is both exciting and functional.



## Retail

The retail industry relies on good illumination to place their products in their best light, and the Xpressives series with T5 lamping provides bright, even illumination with a high CRI level. The Xpressives series can be used for product illumination, accentuating displays and direct or indirect ambient lighting.



# Textures and Colors

## More Standard Finishes for Greater Impact

Xpressives linear fluorescent luminaires set the new standard for boldness with their extensive selection of standard colors, textures and finishes. There is no need to settle for ordinary when you can create one-of-a-kind fixtures for your special décor.

- Seven colors and three textures
- Four metallic finishes including galvanized
- Weather-resistant DuraPlex-II polyester powder coating
- Consult the factory for custom color selections

### Gloss Finishes

**GY** (Gloss Yellow)



**GR** (Gloss Red)



**GW** (Gloss White)



**GU** (Gloss Blue)



**GG** (Gloss Green)



**GB** (Gloss Black)



### Flat Finishes

**FB** (Flat Black)



**FP** (Flat Bronze)



### Wrinkle Finishes

**WW** (Wrinkle White)



**WG** (Green)



**WB** (Wrinkle Black)



**WP** (Wrinkle Bronze)



### Metallic Finishes

**MS** (Metallic Silver)



**MC** (Metallic Copper)



**TS** (Textured Silver)



**NA** (Natural Anodized Aluminum)

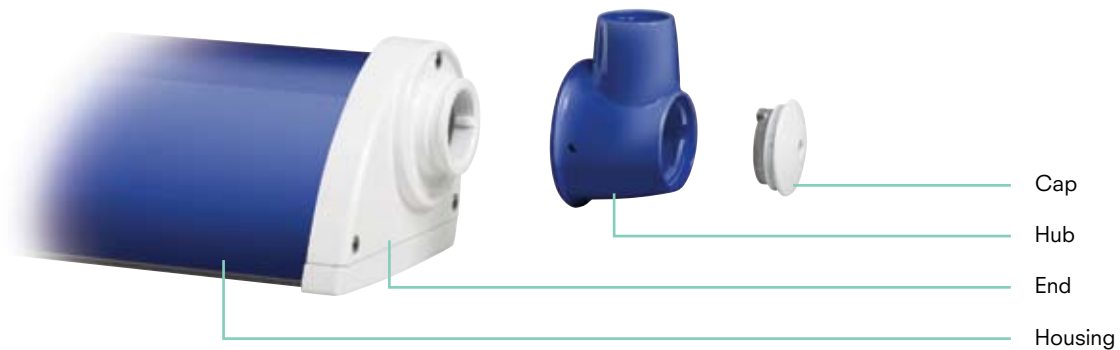


# Color Combinations

## Color combinations that Excite

Stonco offers you greater choices in combining finishes for your Xpressives luminaire because all components are treated individually. Select complementing or contrasting finishes with literally hundreds of color combinations to choose.

- Choose any combination of two finishes using the combination selector as your guide
- Select a combination of components using one of the eight representations
- Select a texture, color or metallic finish signified as Color 1 (blue) followed by Color 2 (white)
- Add more color to your luminaire using the arm and mounting plate



**Combination Q**  
All components matching color



**Combination W**  
Housing and Hub - Color 1  
End and Cap - Color 2



**Combination T**  
Housing - Color 1  
End, Hub and Cap - Color 2



**Combination X**  
Housing, Hub and Cap - Color 1  
End - Color 2



**Combination U**  
Housing and End - Color 1  
Hub and Cap - Color 2



**Combination Y**  
Housing and Cap - Color 1  
End and Hub - Color 2



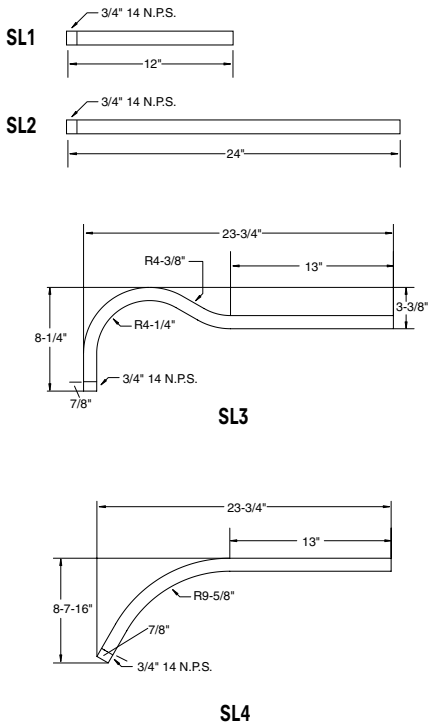
**Combination V**  
Housing, End and Hub - Color 1  
Cap - Color 2



**Combination Z**  
Housing, End and Cap - Color 1  
Hub - Color 2



# Mounting Components



## Arm Logic

Style	Size	Texture	Color
<b>SL1</b> 12" straight arm	<b>3= 3/4"</b>	<b>W= Wrinkle</b>	<b>G= Green</b> <b>B= Black</b> <b>W= White</b> <b>P= Bronze</b>
<b>SL2</b> 24" straight arm		<b>F= Flat</b>	<b>B= Black</b> <b>P= Bronze</b>
<b>SL3</b> 23-3/4" gooseneck		<b>G= High Gloss</b>	<b>G= Green</b> <b>B= Black</b> <b>W= White</b> <b>Y= Yellow</b> <b>U= Blue</b> <b>R= Red</b>
<b>SL4</b> 23-3/4" gooseneck		<b>M= Metallic</b>	<b>C= Copper</b> <b>S= Silver</b>
		<b>T= Textured</b>	<b>S= Silver</b>

**Note:** Arms styles 2, 3 and 4 require cable support (see below, included)  
Arm styles 1 and 2 can be field cut for shorter lengths

## Mounting Components



**WB43XX**  
4-Inch Mounting Plate  
for 2-foot fixtures



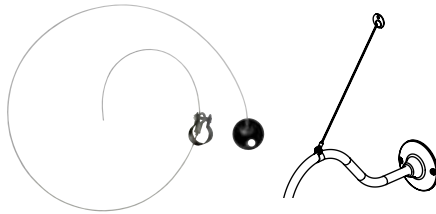
**WB63XX**  
6-Inch Mounting Plate  
used with 4- and 8-foot fixtures



**WB63XX**  
6" Box / Cover  
Power feed supply splice box  
(row mounting only)



**JA3XX-XX**  
Joiner and Cap Assembly  
Contrasting colors available



**ACS1 / ACS3**  
Aircraft Cable Support  
used with arm styles 2, 3 and 4

## Color Chart

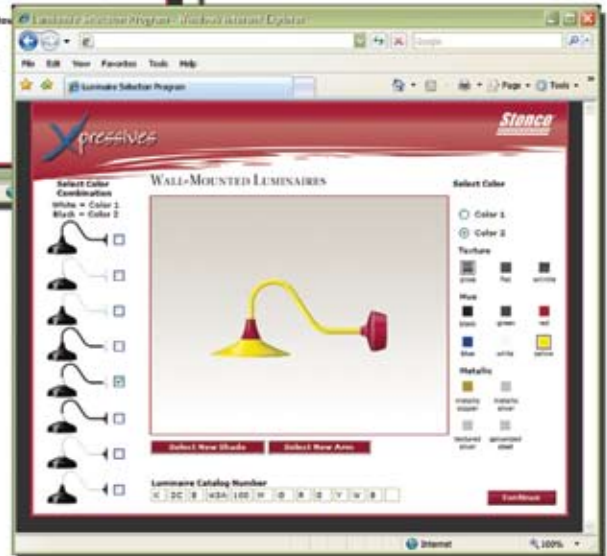
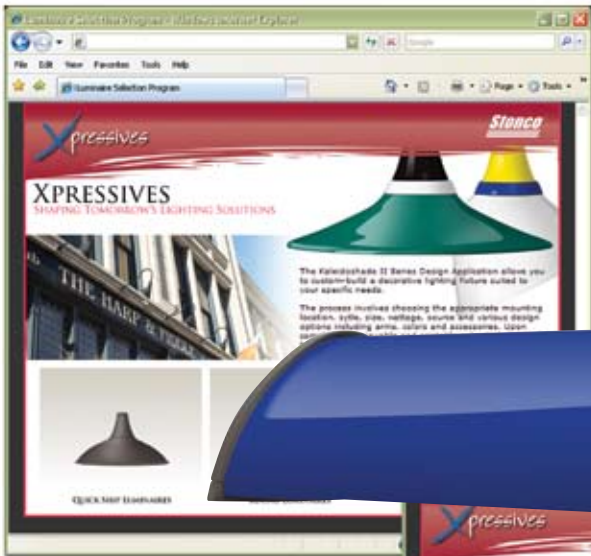
Texture	Color
<b>W= Wrinkle</b>	<b>G= Green</b> <b>B= Black</b> <b>W= White</b> <b>P= Bronze</b>
<b>F= Flat</b>	<b>B= Black</b> <b>P= Bronze</b>
<b>G= High Gloss</b>	<b>G= Green</b> <b>B= Black</b> <b>W= White</b> <b>Y= Yellow</b> <b>U= Blue</b> <b>R= Red</b>
<b>M= Metallic</b>	<b>C= Copper</b> <b>S= Silver</b>
<b>T= Textured</b>	<b>S= Silver</b>

# Sales Tools

Stonco has developed the **Xpressives** Series Design Application for easy product reference and customization purposes. The program allows you to custom build a decorative luminaire for dramatic lighting solutions to suit specific application needs.

### Easy as 1, 2, 3...

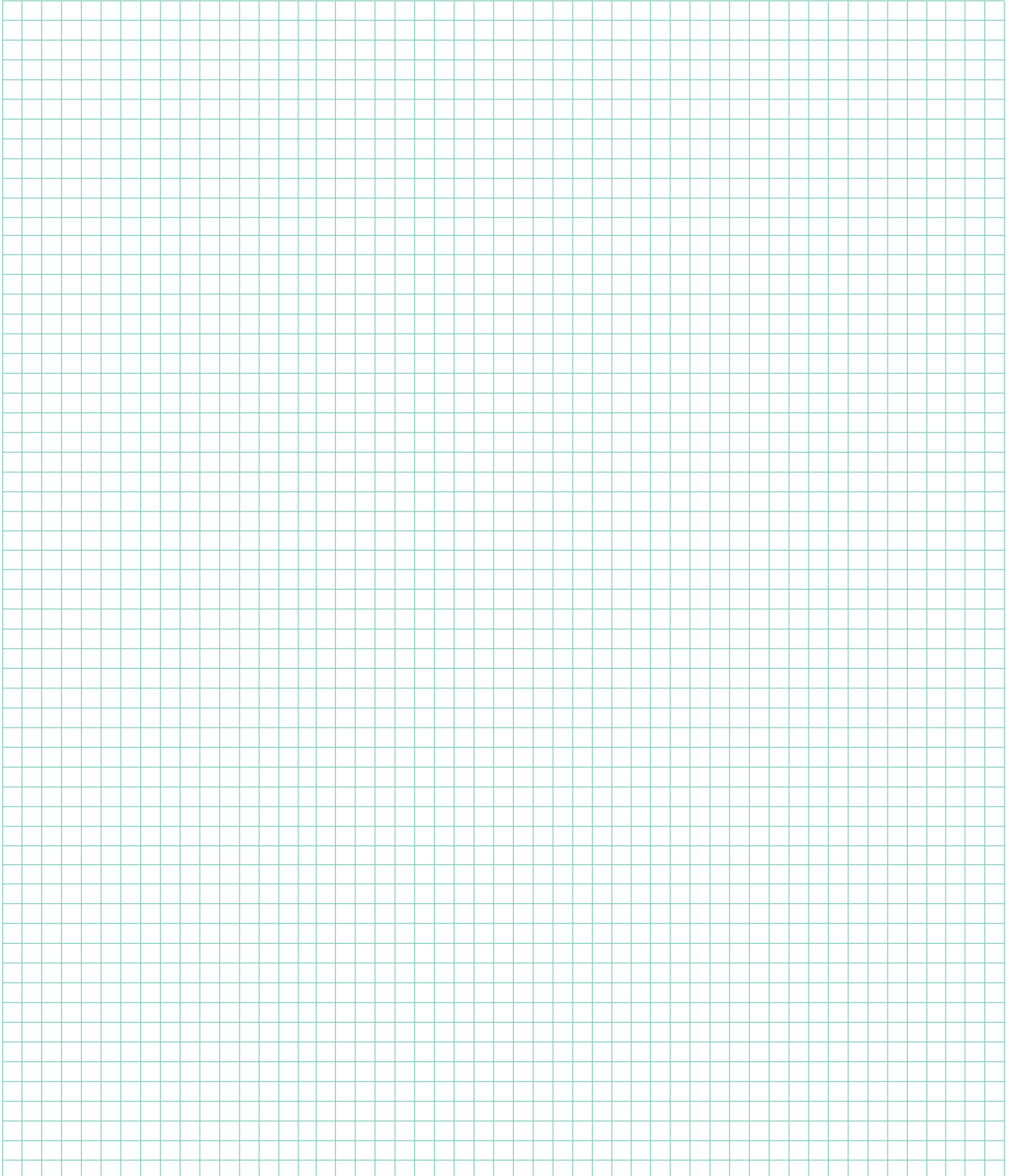
You begin by selecting among wall, ceiling or pole mounting styles and a desired fixture shade. The process will then involve choosing the mounting location, shade size, wattage, source and various design options including arms, colors, options and accessories. Along the way, the program automatically creates the appropriate ordering logic for each phase of the process.



Upon completing all necessary steps, a summary sheet listing your chosen luminaire design and applicable catalog logic will be automatically generated for review. At this time you have the option to either revise certain details, start over or press the finish button to create a viewable and printable submittal sheet for trouble-free fixture specifying.

Another important selling tool will include online access to important **Xpressives** product details via the Stonco website and an individual site available at [www.xpressives.com](http://www.xpressives.com). Please visit both for more information and periodic product updates.

# Notes



# Xpressives



## Xpressives Series Uniting Classic Style and Precision Illumination

The Xpressives Series from Stonco is also available in a round RLM version for additional lighting control. The RLM series maintains the same dramatic appeal as the linear and is available with complementing colors, versatile mounting and a wide choice of lamping options

The Xpressives RLM can be easily substituted when greater, more even illumination is needed, such as signs and facades. Fixtures can be installed easily with contractor-friendly features, and site uniformity is maintained without sacrificing performance.

**Stonco**<sup>®</sup>

a **GENLYTE** company

2345 Vauxhall Road Union, NJ 07083  
1-800-334-2212

[www.x-pressives.com](http://www.x-pressives.com) [www.genlytesupplydivision.com](http://www.genlytesupplydivision.com)

XPRESS-LIN 0307-5